

## Heavy Rainfall Warning based on 0300 UTC of 26<sup>th</sup> July, 2025

### Warnings:

#### (i) Rainfall Warning:

**Jharkhand:** Light to moderate rainfall at most places with **heavy to very heavy rainfall** at isolated places is very likely on 26<sup>th</sup> July.

**Chhattisgarh:** Light to moderate rainfall at most places with **heavy to very heavy rainfall** at isolated places over north Chhattisgarh on 26<sup>th</sup> and **Heavy rainfall** at isolated places is very likely on 27<sup>th</sup> & 28<sup>th</sup> July.

**East Madhya Pradesh:** Light to moderate rainfall at most places with **heavy to very heavy rainfall** at isolated places is very likely during 26<sup>th</sup> – 28<sup>th</sup> July with **extremely heavy rainfall ( $\geq 21$  cm)** on 26<sup>th</sup> July.

**West Madhya Pradesh:** Light to moderate rainfall at most places with **heavy to very heavy rainfall** at isolated places is very likely during 26<sup>th</sup> – 28<sup>th</sup> July with **extremely heavy rainfall ( $\geq 21$  cm)** on 26<sup>th</sup> & 27<sup>th</sup> July.

**Odisha:** Light to moderate rainfall at most places with **heavy to very heavy rainfall** at a few places is very likely on 26<sup>th</sup> July.

**Vidarbha:** Light to moderate rainfall at most places with **heavy to very heavy rainfall** at a few places and **extremely heavy rainfall ( $\geq 21$  cm)** is very likely at isolated places on 26<sup>th</sup> July and **heavy rainfall** at isolated places on 27<sup>th</sup> July.

**Madhya Maharashtra:** Light to moderate rainfall at most places with **heavy to very heavy rainfall** at isolated places is very likely during 26<sup>th</sup> – 28<sup>th</sup> July with **extremely heavy rainfall ( $\geq 21$  cm)** on 26<sup>th</sup> July.

**Gujarat region:** Light to moderate rainfall at most places with **heavy to very heavy rainfall** at isolated places is very likely during 26<sup>th</sup> – 28<sup>th</sup> July with **extremely heavy rainfall ( $\geq 21$  cm)** on 26<sup>th</sup> & 27<sup>th</sup> July.

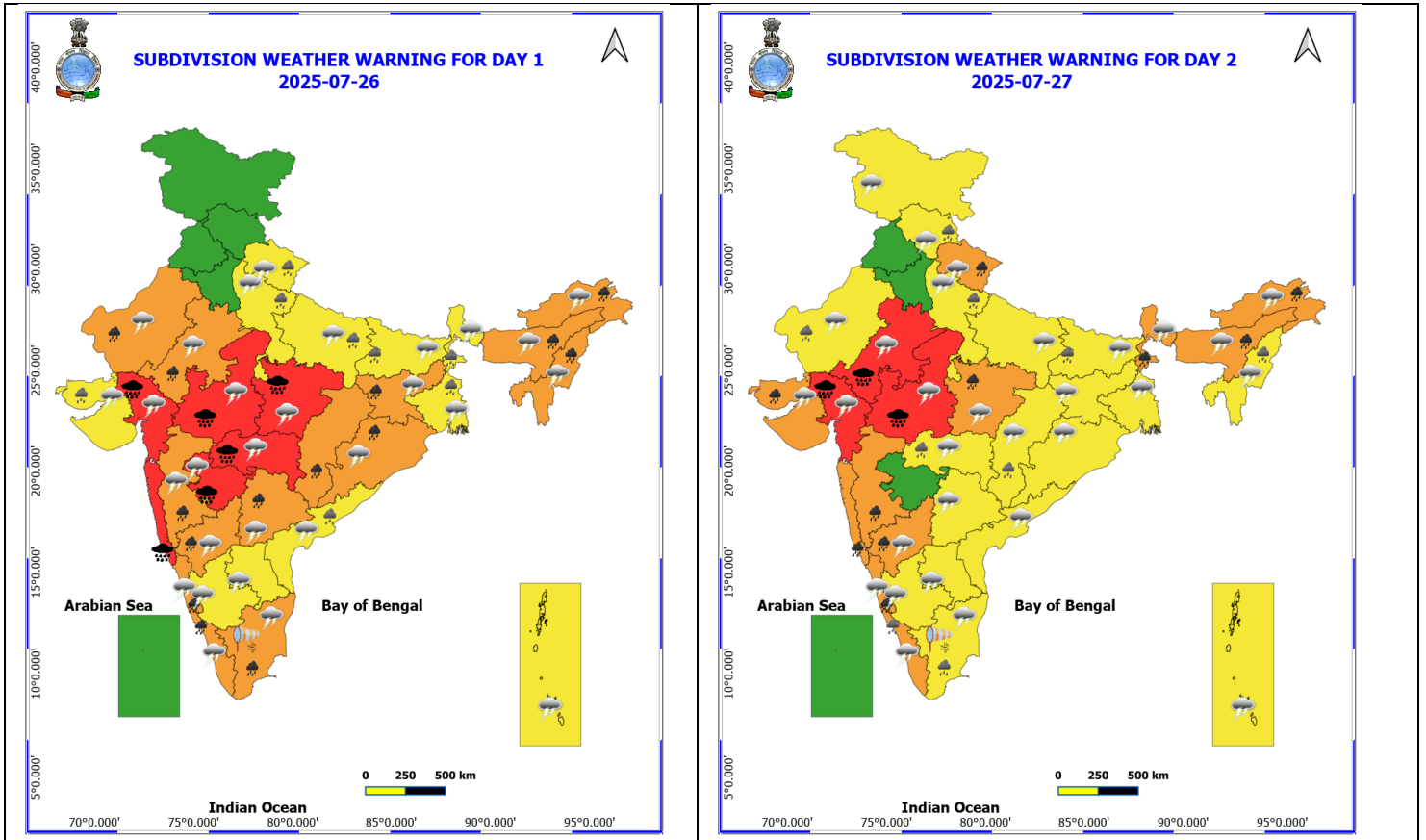
**East Rajasthan:** Light to moderate rainfall at most places with **heavy to very heavy rainfall** at isolated places is very likely during 26<sup>th</sup> – 28<sup>th</sup> July with **extremely heavy rainfall ( $\geq 21$  cm)** on 27<sup>th</sup> & 28<sup>th</sup> July.

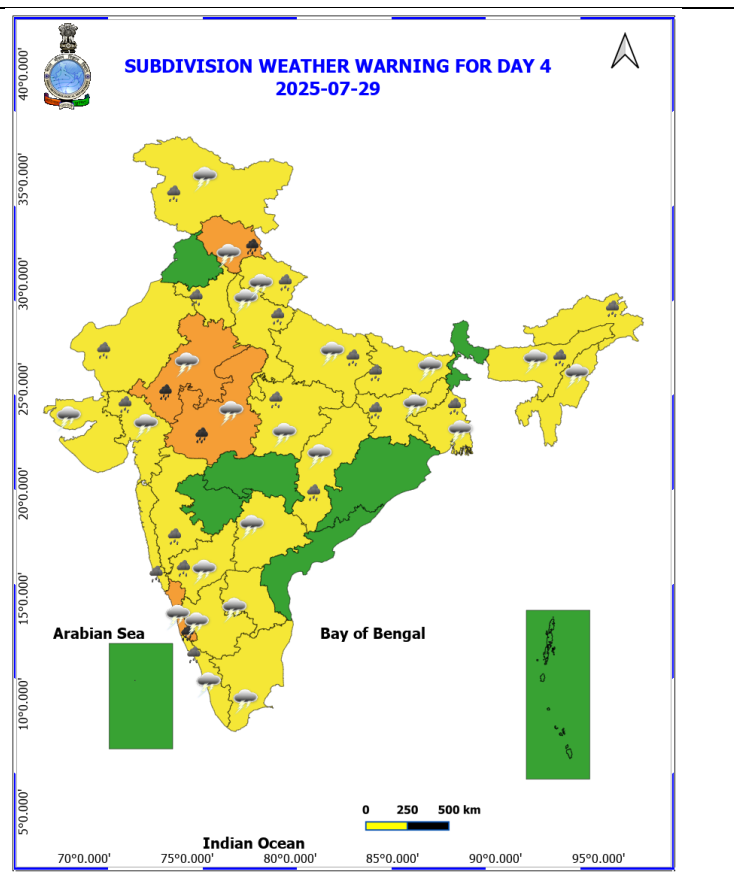
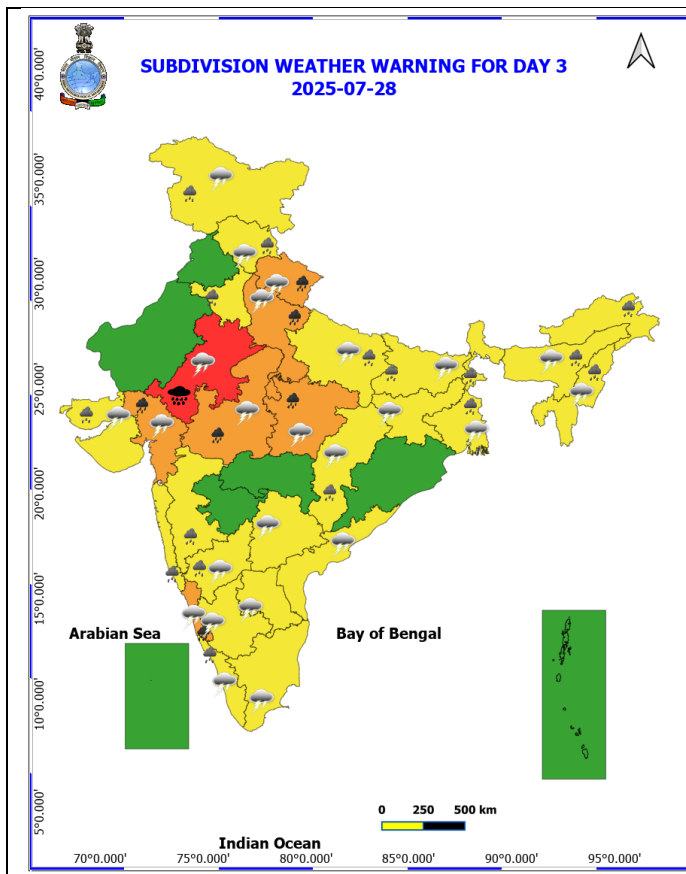
**West Rajasthan:** Light to moderate rainfall at most places with **heavy to very heavy rainfall** at isolated places over north Chhattisgarh on 26<sup>th</sup> and **Heavy rainfall** at isolated places is very likely on 27<sup>th</sup> July.

**Gangetic West Bengal:** Light to moderate rainfall at most places with **heavy rainfall** at isolated places is likely on 26<sup>th</sup> July.

**East Uttar Pradesh:** Light to moderate rainfall at many places with **heavy rainfall** at isolated places is very likely on 26<sup>th</sup> July.

## Weather Warnings Graphics





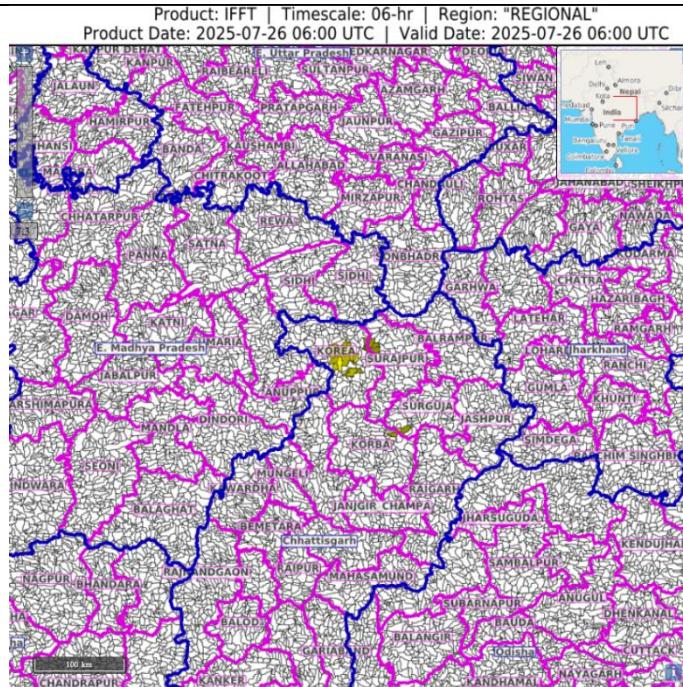


## Flash Flood Guidance

### Observed Flash Flood Threat (IFFT) till 1130 IST of 26-07-2025 :

Low to Moderate flash flood threat observed over few watersheds & neighbourhoods of following Met Sub-divisions during last 6 hours.

Chhattisgarh – Korea, Surjapur and Surguja districts.



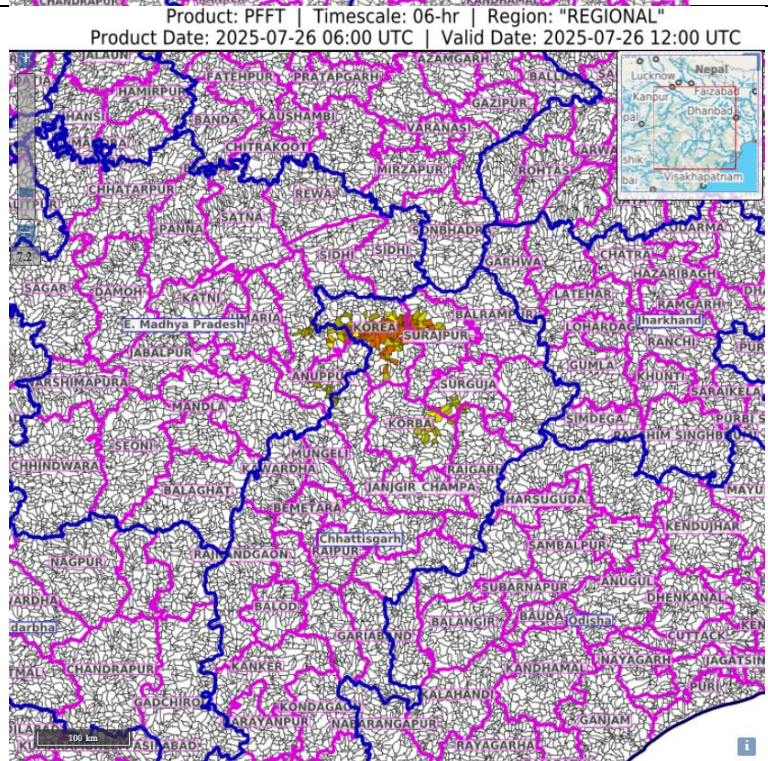
### Persistent Flash Flood Threat (PFFT) till 1730 IST of 26-07-2025 :

Low to Moderate flash flood threat likely over few watersheds & neighbourhoods of following Met Sub-divisions during next 6 hours.

Chhattisgarh – Korba, Korea, Surjapur and Surguja districts.

East Madhya Pradesh – Annupur and Shahdol districts

Surface runoff/ Inundation may occur at some fully saturated soils & low-lying areas over Area of Concern (AoC) as shown in map due to expected rainfall occurrence in next 6 hours.





**24 hours Outlook for the Flash Flood Risk (FFR) till 1130 IST of 27-07-2025 :**

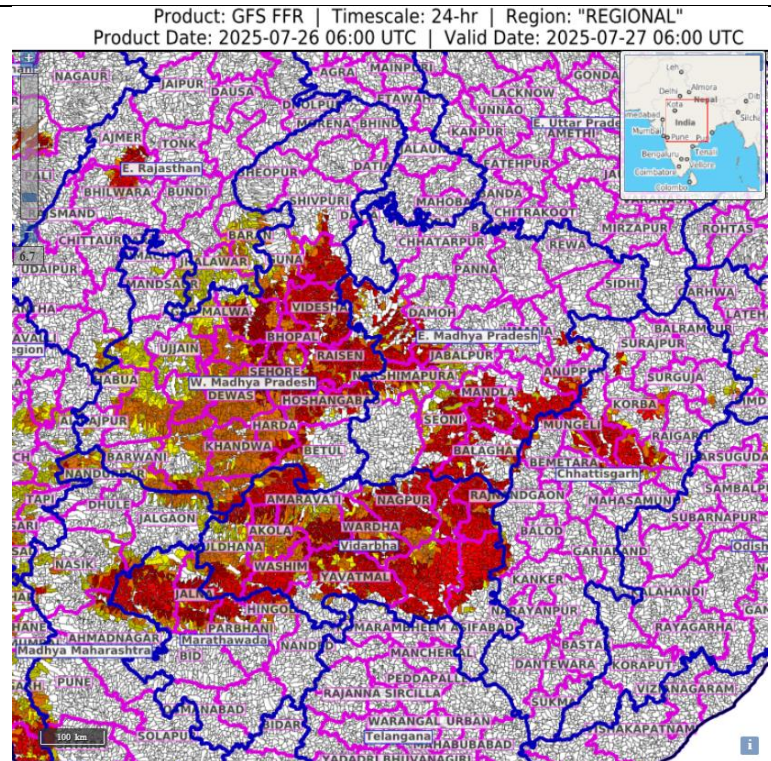
Moderate to High flash flood risk likely over few watersheds & neighbourhoods of following Met Sub-divisions during next 24 hours. Chhattisgarh - Baloda Bazar, Bilaspur, Janjgir Champa, Kawardha, Korba, Korea, Mungeli, Rajnandgaon, Raipur, Surajpur and Surguja districts.

East Madhya Pradesh - Anuppur, Balaghat, Chhindwara, Damoh, Dindori, Jabalpur, Katni, Mandla, Narshimpura, Niwari, Sagar, Seoni, Shahdol, Singrauli, Tikamgarh and Umaria districts.

West Madhya Pradesh - Ashoknagar, Agar Malwa, Betul, Bharwani, Bhopal, Burhanpur, Dewas, Dhar, Guna, Harda, Indore, Jhabua, Kandwa, Khargone, Raisen, Rajgarh, Ratlam, Sehore, Shivpuri, Shajapur, Ujjain, Videsha and Hoshangabad districts.

Vidarbha – Amarawati, Akola, Bhandara, Chandrapur, Gadchiroli, Gondiya, Nagpur, Yavatmal, Washim and Wardha districts.

Surface runoff/ Inundation may occur at some fully saturated soils & low-lying areas over Area of Concern (AoC) as shown in map due to expected rainfall occurrence in next 24 hours.



## Annexure-I

Rainfall recorded (in cm) during past 24 hours till 0830 hours IST of today, the 26<sup>th</sup> July:

**Madhya Maharashtra: Mahabaleshwar- Imd Obsy (Satara) 26, Lonavala\_agri (Pune) 18, Radhanagari (Kolhapur) 15, Ozharkheda - Fmo (Nashik) 14, Harsul - Fmo (Nashik) 11, Shahuwadi (Kolhapur) 10, Igatpuri (Nashik) 10, Chandgad (Kolhapur) 8, Trimbakshwar (Nashik) 8, Girnadam - Fmo (Nashik) 7;**

**Chhattisgarh: Kusmi (Balrampur) 20, Samari (Balrampur) 14, Labhandih (Raipur) 13, Raipur (Raipur) 13, Dongargarh (Rajnandgaon) 13, Pratappur (Surajpur) 13, Balrampur (Balrampur) 12, Raipur City (Raipur) 12, Mukdega (Raigarh) 11, Odagi (Surajpur) 11, Mana-raipur-ap (Raipur) 10, Doura Kochali (Balrampur) 10, Ahiwara (Durg) 9, Pithora (Mahasamund) 9, Tongpaal (Sukma) 9, Chando (Balrampur) 9, Pondi Bachra (Koriya) 9, Bade Bacheli (Dantewada) 9, Kunkuri (Jashpur) 9, Baloda Bazar (Baloda Bazar) 9, Mandir Hasoud (Raipur) 8, Bhilai (Durg) 8, Arang (Raipur) 8, Belargaon (Dhamtari) 7, Shankargarh (Balrampur) 7, Ramanujnagar (Surajpur) 7, Bilha (Bilaspur) 7, Marwahi (Gaurela Pendra Marwahi) 7, Bhaiyathan (Surajpur) 7, Mahasamund (Mahasamund) 7, Charama (Kanker) 7, Raigarh (Raigarh) 7, Ratanpur (Bilaspur) 7, Rajnandgaon (Rajnandgaon) 7;**

**Jharkhand: Ghatsila (East Singbhum), Manjhari (West Singbhum) 19 Each; Kuru (Lohardaga), Majhgaon (West Singbhum), Tantt Nagar (West Singbhum), Hatgamharia (West Singbhum) 12 Each; Mandar (Ranchi) 11; Chaibasa (West Singbhum), Chandil (Seraikela-kharsawan), Arki (Khunti), Goilkera (West Singbhum), Musabani (East Singbhum), Saryu (Latehar), Sisai (Gumla) 10 Each; Latehar Balumat Kvk AWS (Latehar), Gudri (West Singbhum), Sonua (West Singbhum), Kumardungi (West Singbhum), Garu (Latehar) 9 Each; Jamshedpur (East Singbhum), Diyakel Khunti Kvk AWS (Khunti) 8 Each; Latehar (Latehar), Kalebira (Simdega), Jamshedpur AP (East Singbhum), Kharsema (Seraikela-kharsawan), Simdega (Simdega), Gumla (Gumla), Anandpur (West Singbhum), Dhalbhumgarh (East Singbhum), Gurabandha (East Singbhum), Bharno (Gumla) 7 Each;**

**Odisha: Muruda (Mayurbhanj) 18, Bahalda (Mayurbhanj) 17, Baripada (Mayurbhanj) 16, Jamda (Mayurbhanj) 16, Suliapada (Mayurbhanj) 14, Kusumi (Mayurbhanj) 13, Tensa (Sundargarh) 13, Gudvela (Bolangir) 13, Tiring (Mayurbhanj) 12, Raruana (Mayurbhanj) 12, Kaptipada (Mayurbhanj) 12, Sukruli (Mayurbhanj) 11, Rasagovindapur (Mayurbhanj) 10, Jharbandh (Bargarh) 10, Rairangpur (Mayurbhanj) 10, Samakhunta (Mayurbhanj) 10, Champua (Keonjhar) 10, Saintala (Bolangir) 9, Karanjia (Mayurbhanj) 9, Joda (Keonjhar) 9, Bijatala (Mayurbhanj) 9, Balimundali (Mayurbhanj) 9, Betanati (Mayurbhanj) 9, Paikmal (Bargarh) 8, Swam-patna (Keonjhar) 8, Balisankara (Sundargarh) 7, Jhumpura (Keonjhar) 7, Nawana (Mayurbhanj) 7, Chandua Kuliana (Mayurbhanj) 7, Kantamal (Boudhgarh) 7, Laikera (Jharsuguda) 7, Sharpada (Keonjhar) 7;**

**East Madhya Pradesh: Bajag (Dindori) 18, Gadarwara (Narsinghpur) 14, Mawai (Mandla) 14, Sidhi (gopadbanas) (Sidhi) 13, Singrauli-aws (Singrauli) 12, Kotma (Anuppur) 11, Baldevgarh (Tikamgarh) 11, Lanji (Balaghat) 11, Pushprajgarh (Anuppur) 11, Lalburra (Balaghat) 9, Rithi (Katni) 9, Jaitpur (Shahdol) 9, Mehadwani (Dindori) 8, Venkatnagar (Anuppur) 8, Khargapur (Tikamgarh) 8, Harrai (Chindwara) 8, Orchha (Niwari) 7, Mohgaon (Mandla) 7, Sarai (Singrauli) 7;**

**Gujarat Region: Kaprada (Valsad) 17, Silvassa (Dadara & Nagar Haveli) 15, Vapi (Valsad) 13, Madhbun (Dadara & Nagar Haveli) 11, Khanvel (Dadara & Nagar Haveli) 9, Nanipalson (Valsad) 8, Daman\_aws (Daman) 8;**

**East Rajasthan: Dausa (Dausa) 16, Bayana (Bharatpur) 10, Chothkabarwara Sr (Sawai Madhopur) 8, Sarmathura Sr (Dholpur) 8, Anta Sr (Baran) 7, Udaipur-wati (Jhunjhunu) 7, Bassi (Jaipur) 7;**

**West Madhya Pradesh: Udaipura (Raisen) 16, Biaora (Rajgarh) 14, Badi (Raisen) 14, Pipariya (Narmadapuram) 11, Sohagpur (Narmadapuram) 10, Satwas (Dewas) 9, Panchmarhi (Narmadapuram) 9, Kumbhraj (Guna) 9, Mehgaon (Bhind) 9, Bareli (Raisen) 9, Goharganj (Raisen) 9, Bairad (Shivpuri) 9, Gwalior (Gwalior) 8, Sultanpur (Raisen) 8, Chachoda (Guna) 8, Narwar (Shivpuri) 7, Budhni (Sehore) 7;**

**Vidarbha: Armori (Gadchiroli) 9, Gadchiroli (Gadchiroli) 9, Desaiganj (Gadchiroli) 9, Salekasa (Gondia) 8, Gondia Ap (Gondia) 8, Dhanora (Gadchiroli) 8, Gondia (Gondia) 8, Amgaon (Gondia) 7, Kurkheda (Gadchiroli) 7, Nagbhir (Chandrapur) 7, Saoli (Chandrapur) 7, Chikhalda (Amraoti) 7;**

**Gangetic West Bengal: Midnapore (West Midnapore) 9, Mohanpur (West Midnapore) 9, Midnapore(cwc) (West Midnapore) 9, Amta (Howrah) 7, Dum Dum (North 24 Parganas) 7, Canning (South 24 Parganas) 7, Uluberia (Howrah) 7;**